

GN 132.2 | Two-way connecting clamps

for linear actuators, aluminium



- 1
- 2
- 3
- 4
- 5
- 6
- 7
- 8
- 9
- 10
- 11
- 12
- 13
- 14
- 15
- 16
- 17
- 18

MATERIAL

Aluminium, epoxy resin coating, RAL 9005 black colour, matte finish.
AISI 304 stainless steel screws and nuts.

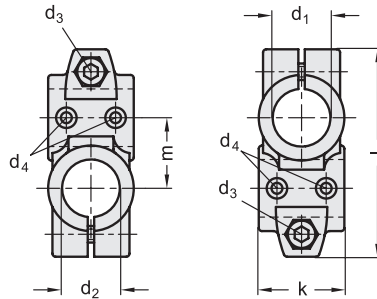
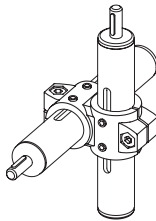
STANDARD EXECUTIONS

- **GN 132.2-B-B**: without sliding bushing.
- **GN 132.2-G-G**: with two polyamide based (PA) or polytetrafluoroethylene based (PTFE) technopolymer sliding bushings.

FEATURES AND APPLICATIONS

GN 132.2 connecting clamps can normally be matched with the linear actuators.

By clamping the guide holes d1/d2 it is possible to adjust the actuator positioning and to lock the slider after having set up the final position.
The clamping screws d3 may be replaced by clamping kits GN 911 (see page 1372).



Conversion Table	
1 mm = 0.039 inch	
d1	
mm	inch
30	1.17
40	1.56
50	1.95
60	2.34



Code	Description	d1#	d1##	d2#	d2##	d3	d4	k	l	m	d3	
											Clamping kit	⚖
GN.42906	GN 132.2-B30-B30-40-2-S	30	-	30	-	M8	M4	40	97	33	GN 911-M8-32	168
GN.42916	GN 132.2-B40-B40-56-2-S	40	-	40	-	M10	M5	56	125	45	GN 911-M10-40	400
GN.42926	GN 132.2-B50-B50-65-2-S	50	-	50	-	M10	M6	65	143	53	GN 911-M10-55	590
GN.42936	GN 132.2-B60-B60-80-2-S	60	-	60	-	M10	M8	80	169	65	GN 911-M10-55	1000
GN.42946	GN 132.2-G30-G30-40-2-S	-	30	-	30	M8	M4	40	97	33	GN 911-M8-32	168
GN.42956	GN 132.2-G40-G40-56-2-S	-	40	-	40	M10	M5	56	125	45	GN 911-M10-40	400
GN.42966	GN 132.2-G50-G50-65-2-S	-	50	-	50	M10	M6	65	143	53	GN 911-M10-55	590
GN.42976	GN 132.2-G60-G60-80-2-S	-	60	-	60	M10	M8	80	169	65	GN 911-M10-55	1000

Hole without sliding bushing.
Hole with sliding bushing.